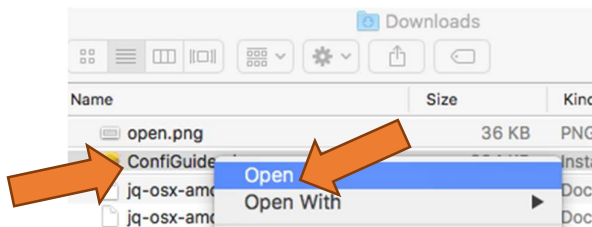


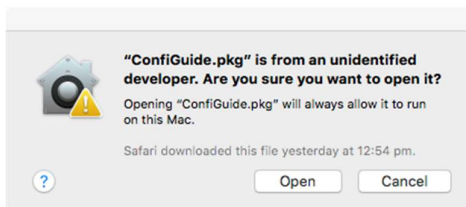


Installation Procedure

1. Connect to the college enrolment WiFi network. **It is available at the library and H10 area.**
SKIP THIS STEP if you already have Internet connection
Wi-Fi Network: **LilydaleHeightsEnrol**
Wi-Fi Password: **byodlilydale**
2. Sign into Lilydale Heights BYOD Portal using your school username and password. You may find this link on the school Launchpad page
<http://byod.lilydaleheights.vic.edu.au>
3. Accept **Terms and Conditions** of the Program
4. Click **I want to connect my BYOD**. It will show you a brief instruction how to connect.
5. Click **Configure My Mac** to download the installation package.
6. Open in Finder downloaded file, ConfGuide.pkg, then **two-finger click** it and select **Open**.

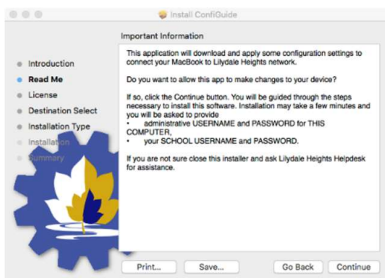


At this stage, you may see warnings about an unidentified developer, or an application downloaded from the internet. The messages may appear slightly different and different actions may be required depending on OS X version. Click the **Open** button.

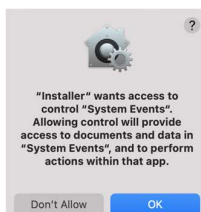


Alternatively, go to System Preferences/Security&Privacy and click **Open Anyway** in General Tab to run the package.

7. Click **Continue** to read some important information, then again click **Continue** to read Terms and Conditions, then **agree** with Terms and Conditions.



8. Click **Install**. Now you are asked to provide administrative credentials for your Mac to apply further changes and you may be asked to allow "Installer" access to System Events. Click **OK**



Note: You may be asked to do it again in the process of installation.

9. Then provide your school username and password.

Lilydale Heights BYOD Configuration Guide

Enter your SCHOOL USERNAME.

If you are not sure click the Cancel and contact Lilydale Heights Helpdesk for assistance.

type your school user name here

Cancel Next

Lilydale Heights BYOD Configuration Guide

Enter your SCHOOL PASSWORD.

If you are not sure click the Cancel and contact Lilydale Heights Helpdesk for assistance.

...

Cancel Next

Note: You may be asked to do it again in the process of installation.

10. If your name and password are accepted, you may be asked to install LHC profile. Carefully read instructions and click the Next.

Lilydale Heights BYOD Configuration Guide

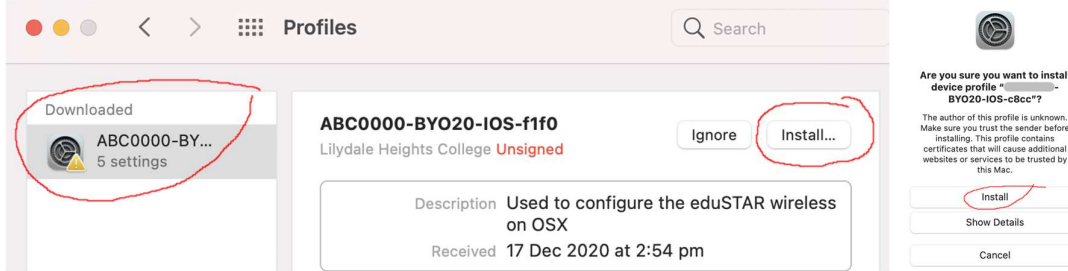
1. Click Next to Open Profiles in System Preferences.

2. Install LHC profile.
Its name starts from [redacted] and it has an exclamation mark.

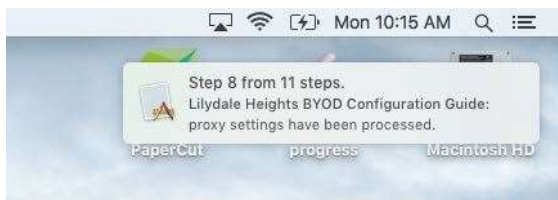
If you are not sure click the Cancel and contact Lilydale Heights Helpdesk for assistance.

Cancel Next

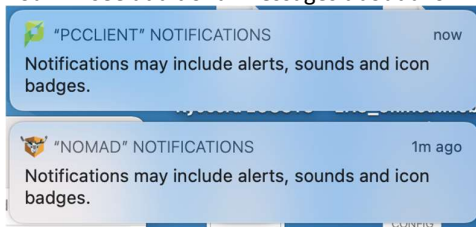
11. System Preferences Profiles are open for you. If not ask Helpdesk for assistance. Select downloaded profile starting from your school username and click install. Then you must confirm profile installation again



12. After installation of LHC profile your MacBook will have installed and configured some applications and settings to work in the school. You will see a few notifications about the progress of installation in the right top corner of your Mac.



13. You will see additional messages about allowing notifications from PCClient and/or NOMAD. Allow notifications.



14. When asked provide school password to NOMAD application.

Please enter School Username and Password

User Name your school user name

Password

Sign In

15. At the end of successful installation, you will see a message in your browser about success. If something went wrong error messages may be displayed as well in your browser or by your Mac system. At this stage you can access Internet and printing in the school. To install additional software e.g., Microsoft Office or eBooks go to the home page of BYOD Portal and click BYOD Downloads. Then download and install additional applications or eBooks as appropriate.