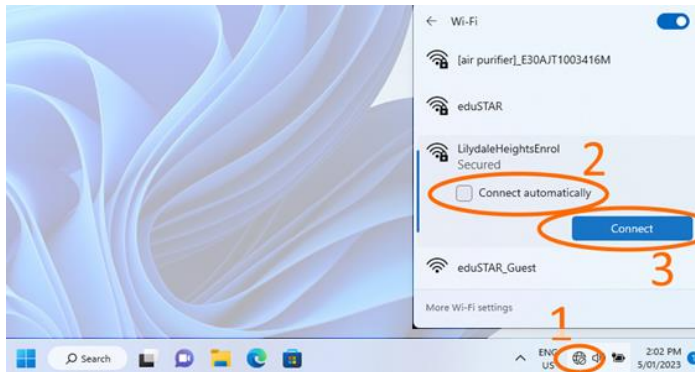




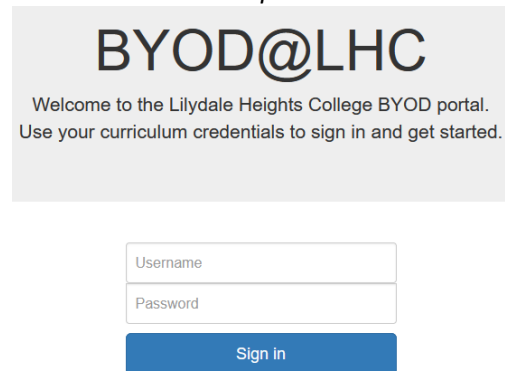
BYOD Configuration Guide for Windows

1. Connect to the college enrolment WiFi network. **It is available at the library and H10 area.**
SKIP THIS STEP if you already have Internet connection. (For example, when you are connected to your home Wi-Fi or mobile hotspot)
 Wi-Fi Network: **LilydaleHeightsEnrol** Wi-Fi Password: **byodlilydale**
2. Sign in to **Lilydale Heights BYOD Portal** using your school username and password. If BYOD Portal is not open automatically enter its address (<https://byod.lilydaleheights.vic.edu.au>) in your browser address bar

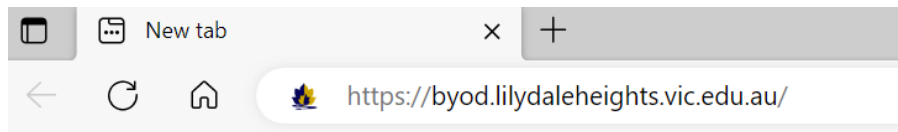
Step 1



Step 2

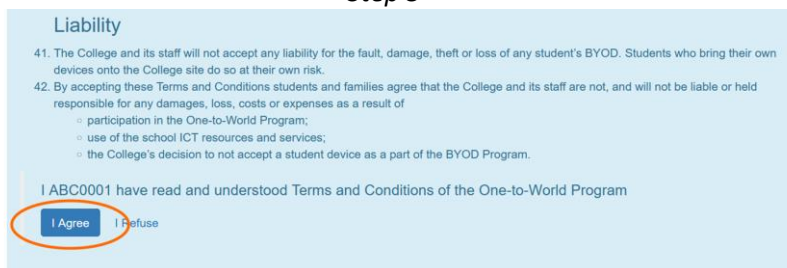


Step 2 (if required enter BYOD Portal in address bar)



3. Click **I Agree** to accept Terms and Conditions of the Program.
4. Click **I want to connect my Windows laptop**. It will show you a brief instruction about how to connect. Then click **Configure My PC** to start downloading **Config App**.

Step 3

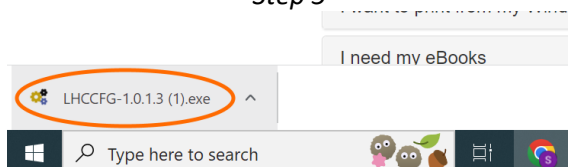


Step 4

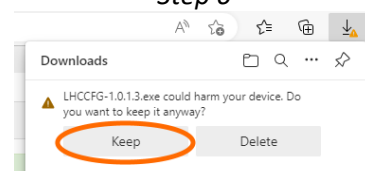


5. Depending on your browser find downloaded app in the left bottom or in the right top corner of the browser
6. You may have to confirm you trust the downloaded app to keep it. If you can't download or execute **Config App** check settings of your antivirus or other 3-rd party security bells and whistles installed on your laptop.

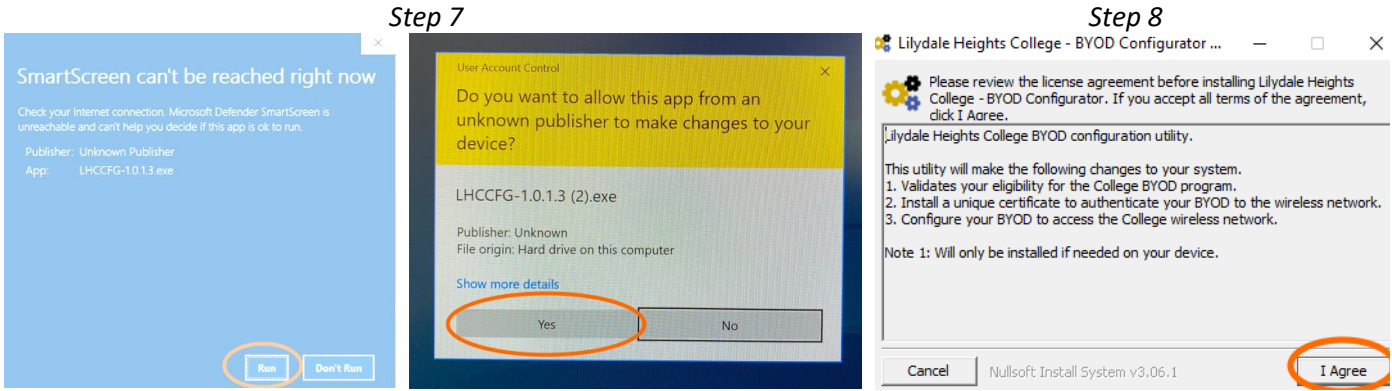
Step 5



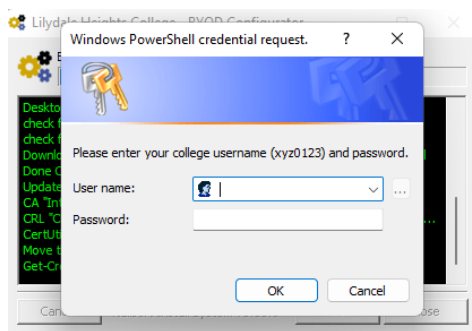
Step 6



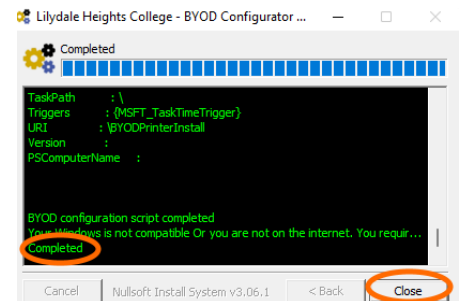
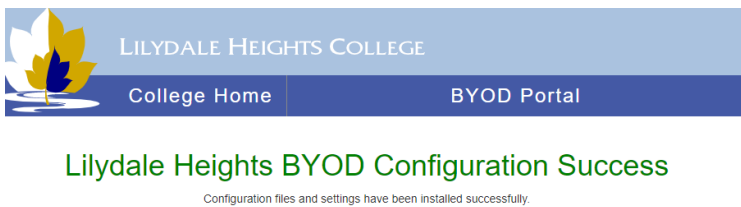
- Click **LHCCFG-1.0.1.3.exe** to open the app. At this stage, you may see warnings about an unidentified developer or an application downloaded from the internet. The messages may appear slightly different depending on Windows version. Please agree to run the app.
- Then click **I Agree** to accept the app license agreement



- You must provide your school user name and password to make system changes.



- The installation process may take 1-2 minutes. If successful you will see configuration success message in your browser. Then you may close the app.



Optional Steps

- At this stage you may install Microsoft Office as well. Open BYOD Portal again and Click I want to install Office and then Microsoft Office 365. Office Installation App will be downloaded to your laptop in the same way as BYOD Configuration App. Please keep and open it. Installation may take 10-20 min.
- Sing in to Microsoft Office using your school email and password. Your school email is your username @lilydaleheights.vic.edu.au

